



AutoAssesspro.AI

WORLD'S FIRST **AI POWERED** ASPICE WORK PRODUCT REVIEWER



Omnex Systems LLC

315 E. Eisenhower Parkway Suite 300,
Ann Arbor, MI 48108, USA

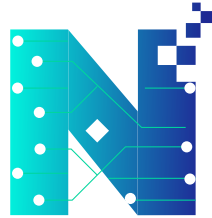
Tel: +1 734-585-1369
Fax: +1 734-761-4966

info@omnexsystems.com
www.omnexsystems.com

USA INDIA CHINA CANADA MIDDLE EAST UAE THAILAND EUROPE SINGAPORE MALAYSIA MEXICO

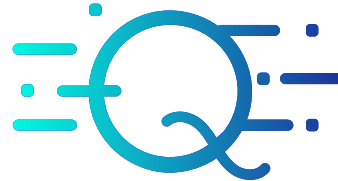
About Omnex Systems

Omnex Systems is a global leader in AI-powered enterprise quality management solutions. Their flagship solution, the Enterprise-Wide Quality and Integrated Management System (EwQIMS), has evolved into EQMS.AI, integrating machine learning, NLP, and deep learning. This comprehensive system includes 14 modules offered across four platforms:



NPI.AI

V-Model based and
AI-powered PPAP Reviewer



QHSE.AI

Quality, Environmental, Health &
Safety, Social Responsibility, IT Security



eMOBILITY.AI

Managing Requirements,
Functional Safety,
Product Cybersecurity,
AI-powered O-BOT ASPICE
process reviews



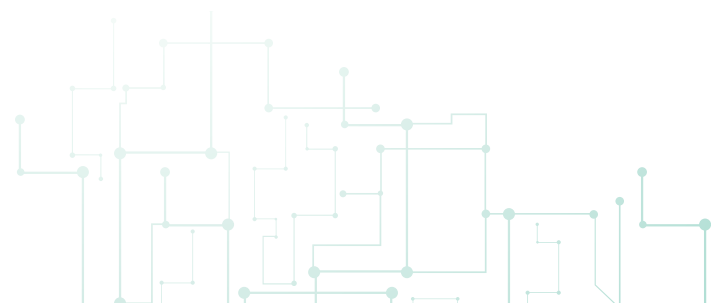
Supplier Quality.AI

Efficient supply
chain management

EQMS.AI also includes product planning/design (DFMEA, test plans, process flow, PFMEA, and control plans), APQP, requirements management, document management, internal and supplier audits, LPA, change management, customer complaints, continual improvement, competency management, and TPM.

With advanced AI tools like O-BOT, Omnex's solutions provide intelligent recommendations, real-time validation, and predictive analysis. This system serves industries including automotive, aerospace, semiconductors, general manufacturing, and medical devices. It also integrates mobile apps, business intelligence, and IoT, available in cloud and on-premises solutions.

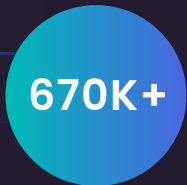
Omnex Systems is part of the Omnex group, a provider of software, consulting, training and staffing services.



Enterprise Quality Management Platform powered by AI



EQMS.AI



Users



Platforms



Years

Product
Development
& Digitalization



Key
Industries




Technology
Team



We are also certified for
ISO 9001, ISO 14001, ISO 45001, and Compliance to ISO 26000

How can AI help in Quality

 Manage Stakeholder, Product and Regulatory requirements


 Assist Product Launch, Design & Prototyping

 Inspection & Defect Detection

 Predict Quality Issues

 Supply Chain Optimization

 Anomaly Detection and Problem Solving

 Risk Management, Compliance and Continuous improvement

 Predictive Maintenance



O-BOT AI for EQMS



O-BOT: AI for EQMS

The O-BOT Engine is purpose-built to accelerate Generative AI implementations within Enterprise Quality Management Systems (EQMS). By connecting directly to your enterprise data, O-BOT enables seamless integration with existing toolchains, eliminating the need for disruptive overhauls. Pretrained on QMS-specific data, it transforms this structured and unstructured information into actionable outputs through four core AI capabilities: Validation Systems to ensure compliance and consistency, Recommendation Systems to guide decision-making, Predictive Systems to forecast potential risks, and Generative AI to produce high-quality QMS content.

Introduction to AutoAssesspro.AI

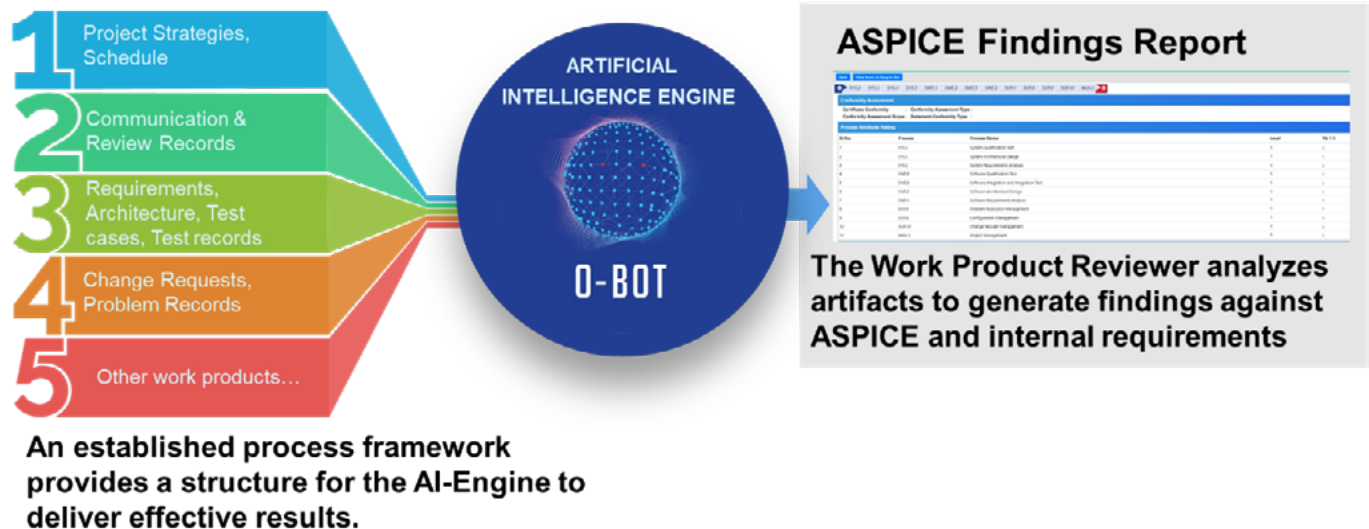


AutoAssesspro.AI

AutoAssesspro.AI is a solution developed by Omnex in partnership with BorgWarner to perform ASPICE capability evaluations on embedded systems projects. It connects seamlessly with your organization's IT infrastructure - including repositories for requirements, test cases, issues, change requests, and more - to deliver prioritized findings that teams can act on for continuous improvement.

AutoAssesspro.AI combines Artificial Intelligence, Machine Learning, Natural Language Processing (NLP), Large Language Models (LLMs), and advanced programming logic to perform both qualitative and quantitative analysis of work products

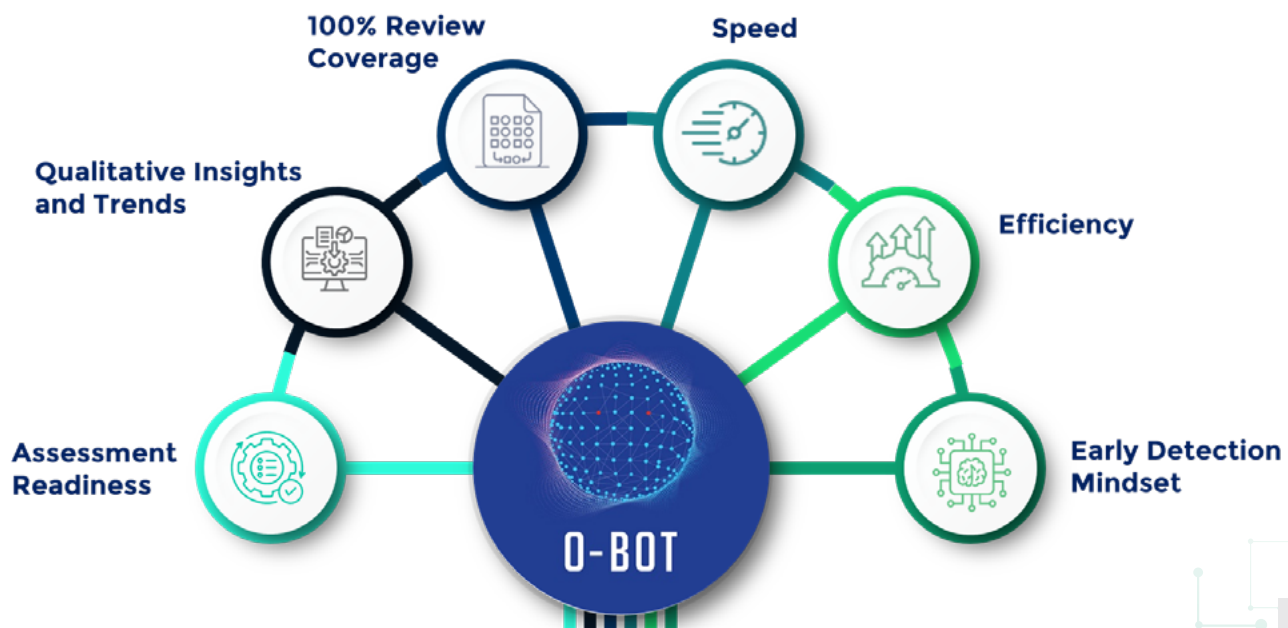
Leveraging AI in ASPICE Work Product Development



AutoAssesspro.AI comes with built-in rules and logic to review ASPICE work products, ensuring consistency and compliance across projects. The solution is further trained and adapted to each customer's data, delivering tailored insights aligned with their engineering environment. To safeguard confidentiality, the pre-trained models are not shared between customers, ensuring both exclusivity and data security.

Value Extraction from AutoAssesspro.AI

- Run weekly as a preventive measure until project teams are fully trained, then adjust frequency.
- Re-run before and after assessments to validate corrective actions.
- Empower development teams to self-diagnose issues instead of waiting for process compliance audits.
- Reuse ML training from past projects to accelerate new program launches.
- Retrain models easily against revised criteria set by the subject matter experts.



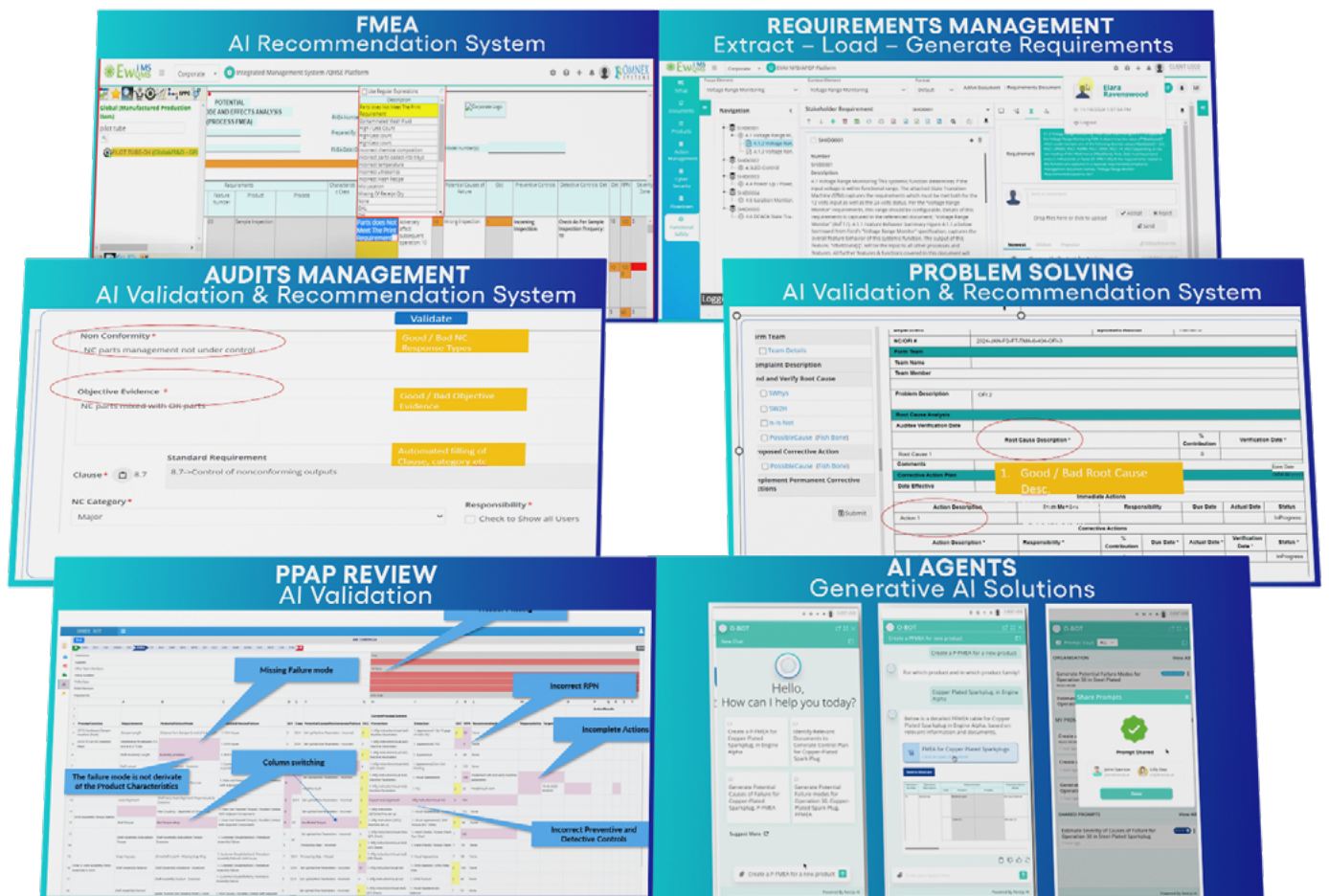
Deployment of AutoAssesspro.AI

- The activity starts with a discovery/gap analysis on your current ASPICE projects and the associated tool chains. Scope is determined at this step.
- A cross functional team of Omnex members (that include ASPICE SMEs, Product Developers, ML experts, QAs and more) and your organization's team (that include Process experts, Functional SMEs) are created.
- Requirements are created by Omnex for the AutoAssesspro.AI. These requirements leverage existing AutoAssesspro.AI development and outline the needs for any additional development. Detailed connections for development to connect AutoAssesspro.AI to your organization's IT systems are laid out.
- Development is carried out to tailor AutoAssesspro.AI to your organization's process framework.
- ML Rules are trained against criteria, set collectively between ASPICE SMEs and Functional SMEs.
- A Pilot is conducted on an initial project then expanded to additional projects.

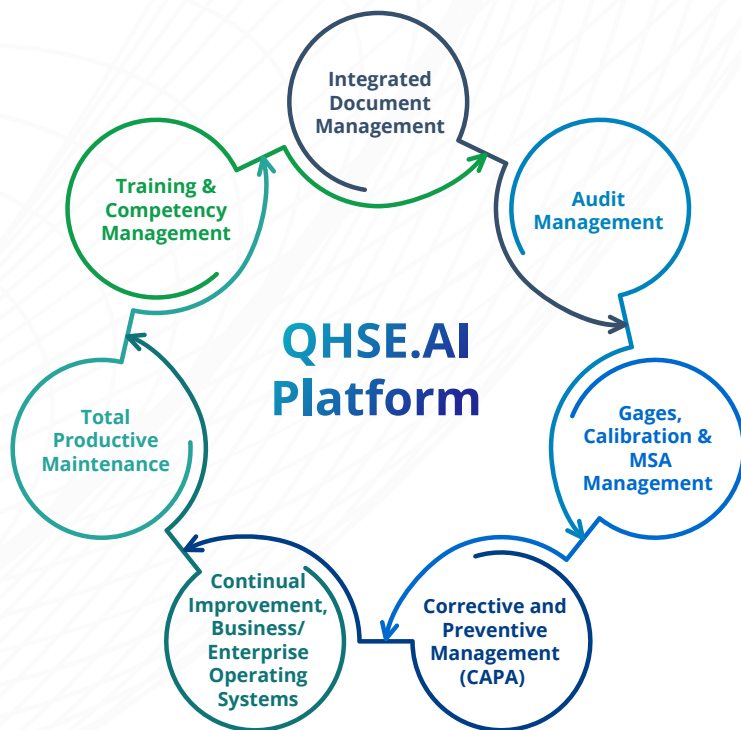
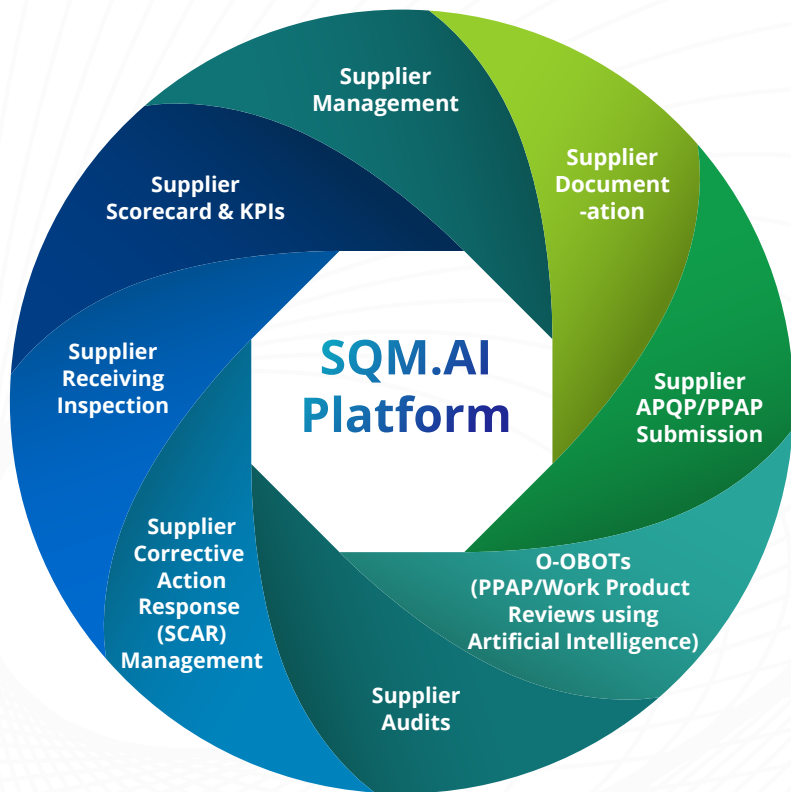
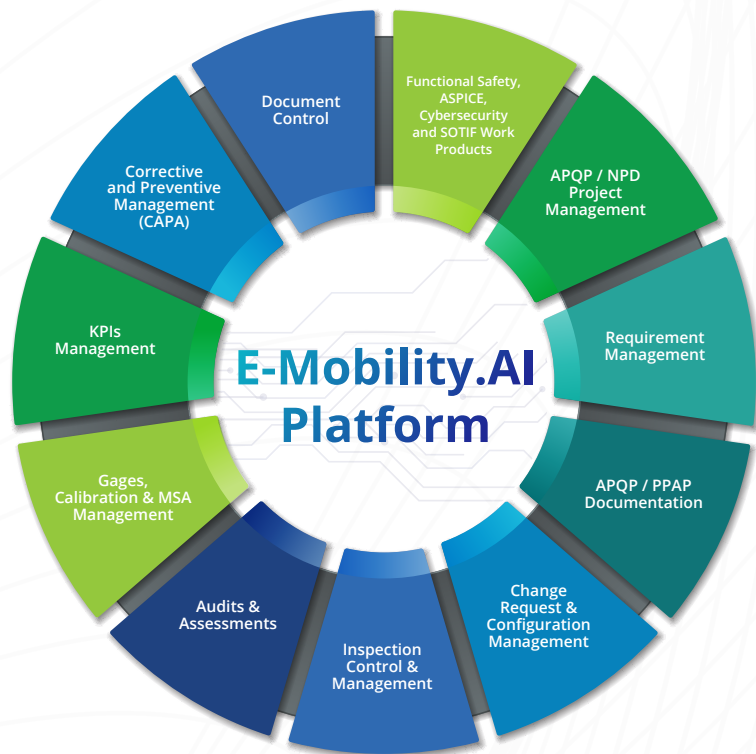
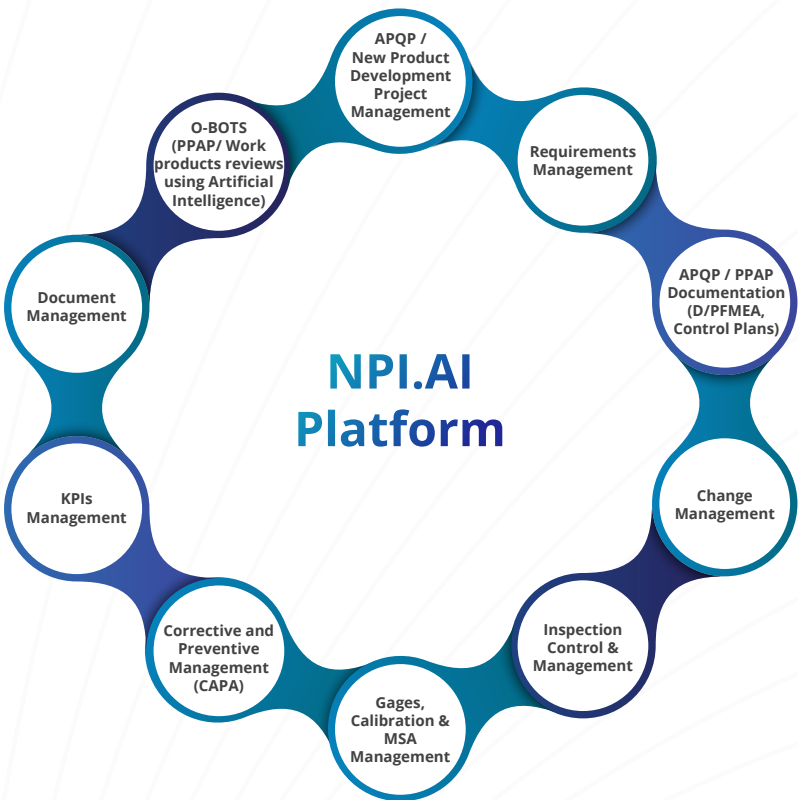


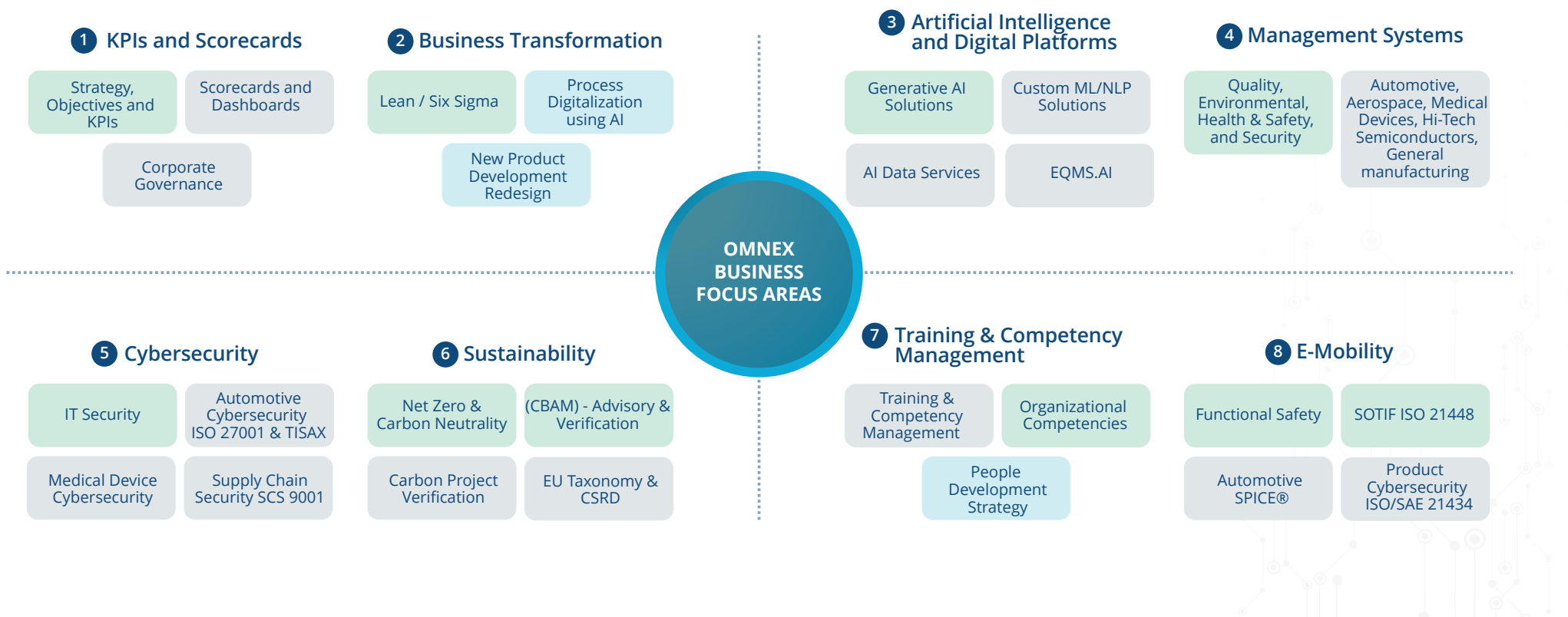
BorgWarner has successfully deployed AutoAssesspro.AI across six global embedded systems projects, spanning OEM-specific applications and new programs. The solution is used to analyze embedded software development across 12 ASPICE processes, including requirements, architecture, test cases, planning, and more.

Other Omnex AI Solutions:



One Suite = Multiple Platform





Omnex Systems LLC

315 E. Eisenhower Parkway Suite 300,
Ann Arbor, MI 48108, USA

Tel: +1 734-585-1369
Fax: +1 734-761-4966

info@omnexsystems.com
www.omnexsystems.com

USA INDIA CHINA CANADA MIDDLE EAST UAE THAILAND EUROPE SINGAPORE MALAYSIA MEXICO